



Group Eleven Intersects 10.3 m of 14.6% Zinc, 5.0% Lead and 43 g/t Silver at Carrickittle Prospect at 100%-owned PG West Project, Ireland

Vancouver, Canada, July 6th, 2020 - Group Eleven Resources Corp. (TSX.V: ZNG; OTC: GRLVF; FRA: 3GE) (“Group Eleven” or the “Company”) is pleased to announce that it has intersected 10.3 metres of 14.6% zinc, 5.0% lead (19.6% combined) and 43 g/t silver at its drilling on its 100%-owned PG West Project in the Republic of Ireland. Mineralization is shallow, open along strike and represents not only the best mineralization ever encountered at the Carrickittle prospect (“Carrickittle”), but also the best mineralization Group Eleven has drilled since inception of the Company in early 2015.

Highlights:

- Hole G11-2840-04 intersected **10.3 metres of 14.6% zinc, 5.0% lead (19.6% combined) and 43 g/t silver** (interpreted to be approximately true width, starting at 56.3 metres downhole)
- The above intersection contains a high-grade zone of massive sulphides containing **6.6 metres of 21.5% zinc and 7.0% lead (28.4% combined) and 59 g/t silver**, starting at 60.0 metres downhole
- The hole was designed to test the hypothesis that historic (1965-66) drilling at the prospect was, in hindsight, oriented in the wrong direction (all historic holes were drilled towards the **south and west**, or vertical)
- G11-2840-04 was oriented due **east** (090° with a dip of -45°) and designed to scissor (drill perpendicular to) historic hole P18 which intersected a number of narrow (approximately 1-metre wide) **high-grade intervals** over approximately 25 metres downhole
- Results from G11-2840-04 demonstrate that P18 appears to have skimmed approximately parallel along the **top of a zone of massive sulphide** which dips moderately-steeply to the west
- The above reinterpretation directly implies mineralization is **open along strike to the north** for at least one kilometre **and to the south** for a few hundred metres
- In addition to the above, **three other zones** of known mineralization at Carrickittle now require immediate follow-up and reinterpretation, along with a number of northwest-trending faults in the area (which appear to be parallel to the fault controlling mineralization in G11-2840-04)

“The thickness of massive sulphides and associated grades reaching as high as 55.7%¹ zinc and lead, was a much better result than expected. This intercept represents a breakthrough in our understanding of how mineralization is oriented at Carrickittle and offers a compelling hypothesis as to why historic drilling missed or seemingly only skimmed along areas of mineralization,” stated Bart Jaworski, CEO.

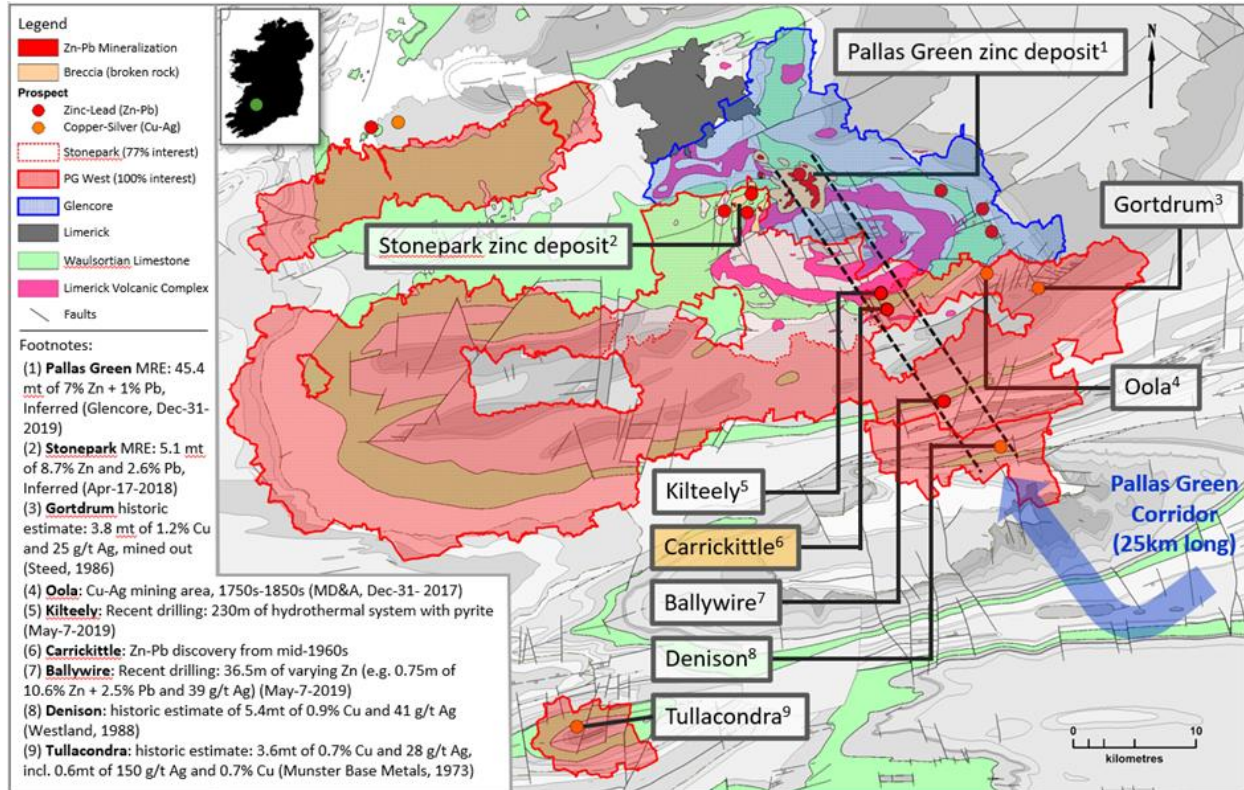
“Finding such high-grade mineralization at shallow depths is a very rare occurrence these days in the industry and it is highly encouraging for Group Eleven. Carrickittle is a prospect that lay largely dormant for over 54 years after it was labelled as ‘sub-economic’ in 1966. The prospect, however, now clearly appears under-drilled and under-conceptualized – and requires immediate follow up work and drilling.”

¹ See Exhibit 3: “Assays from G11-2840-04 at Carrickittle Prospect, PG West Project, Ireland”

Carrickittle Prospect, PG West Project (near Limerick, Republic of Ireland)

The Carrickittle prospect is located on the Company's 100%-interest PG West project located in the Limerick basin, in south-western Ireland (see [Exhibit 1](#)). The prospect lies within the Pallas Green Corridor, a 25 kilometre-long trend of mineralization defined by the Pallas Green deposit² in the north and the Company's Carrickittle, Ballywire and Denison prospects to the south.

Exhibit 1. Location of the Carrickittle Prospect on Group Eleven's 100%-Interest PG West Project, Ireland



Details on G11-2840-04

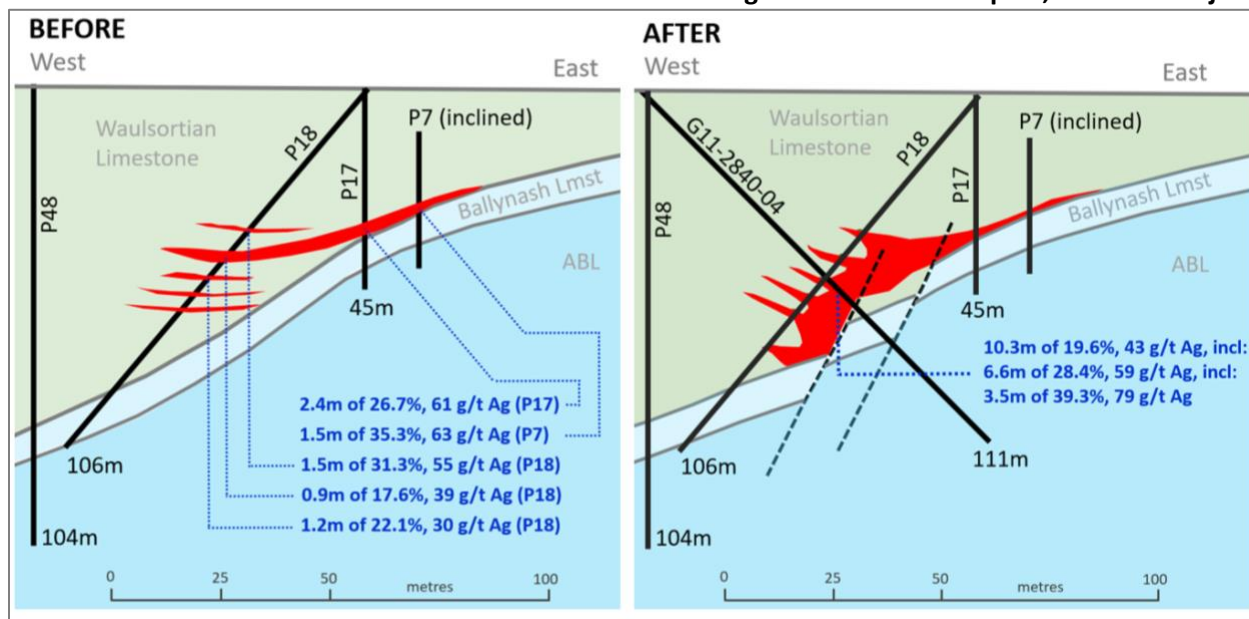
Hole G11-2840-04 was designed to test the hypothesis that historic (1965-66) drilling at the prospect was, in hindsight, oriented in the **wrong direction** (all historic holes were drilled towards the south and west, or vertical; see [Exhibits 5 and 6](#)). G11-2840-04 was oriented due east (090° with a dip of -45°) and designed to scissor (drill perpendicular to) historic hole P18 which intersected a number of high-grade intervals over approximately 25 metres downhole (e.g. 1.5 metres of 31.3% Zn+Pb³ and 55 g/t Ag; 0.91 metres of 17.6% Zn+Pb³ and 39 g/t Ag; 1.2 metres of 22.1% Zn+Pb³ and 30 g/t Ag; see 'Before' in [Exhibit 2](#)).

Results from G11-2840-04 demonstrate that P18 appears to have skimmed approximately parallel along the top of a zone of massive sulphide which dips moderately-steeply to the west (see 'After' in [Exhibit 2](#)).

² Resources and Reserves Report (Glencore, December 31, 2019) – 45.4 million tonnes of 7% Zn + 1% Pb (Inferred)

³ See Exhibit 6 at the end of this News Release for a breakdown of individual zinc and lead grades.

Exhibit 2. 'Before' and 'After' Cross-Sections of Recent Drilling at Carrickittle Prospect, PG West Project



Note: Location of the cross-section line is shown in Exhibit 4; the intercept '0.9m of 17.6%' is contained within a wider zone of mineralization.

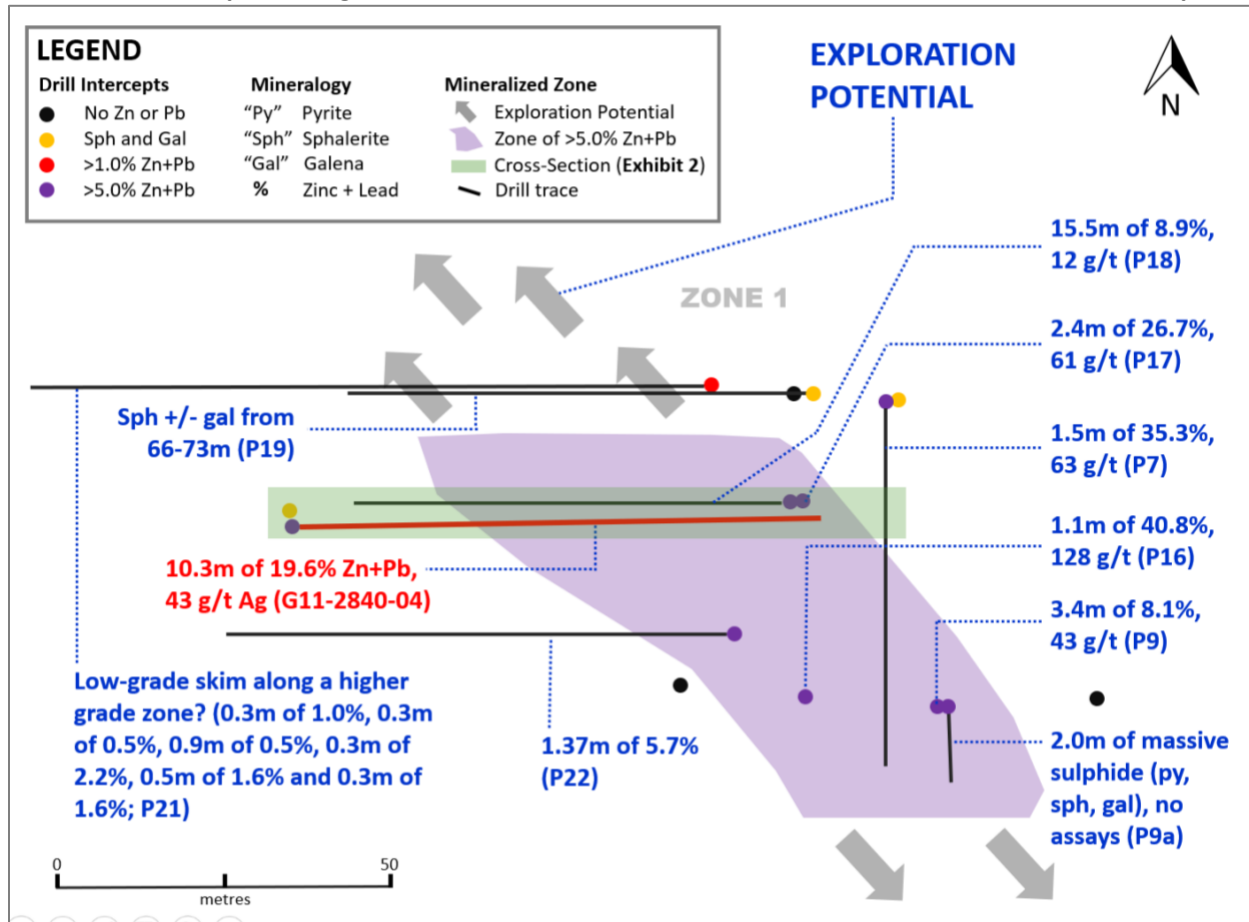
Assay results from G11-2840-04 and the plan drill hole map are shown in Exhibit 3 and 4. Importantly, the overall grade of the interval in G11-2840-04 is likely to be understated as the 6.6-metre-thick massive sulphide interval contains **1.10 metres of no core recovery** (material was soft and friable) and the grade for this missing interval was assumed to be zero. The fact that several small fragments of massive sulphide were observed in this interval suggests the grade may be similar to the samples on either side of it.

Exhibit 3. Assays from G11-2840-04 at Carrickittle Prospect, PG West Project, Ireland

From (m)	Interval (m)	Zn (%)	Pb (%)	Zn+Pb (%)	Ag (g/t)	Zn-Eq (%)	m x % (ZnEq)	Lithology
56.30	1.10	4.40	2.53	6.93	26.3	7.51	8.3	WL, calcite veins w py, sph
57.40	1.50	1.59	1.45	3.03	10.9	3.27	4.9	WL, calcite veins w py, sph
58.90	1.10	0.97	0.82	1.79	5.4	1.90	2.1	WL, calcite veins w py, sph
60.00	1.30	5.14	3.30	8.44	25.7	9.00	11.7	WL, calcite veins w more sph
61.30	0.70	12.50	20.70	33.20	84.4	35.05	24.5	WL, more massive sulphide
62.00	1.00	23.90	11.05	34.95	77.1	36.64	36.6	Massive sulphide
63.00	1.00	43.50	5.34	48.84	81.7	50.63	50.6	Massive sulphide
64.00	0.80	33.80	4.43	38.23	74.6	39.86	31.9	Massive sulphide
64.80	1.10	0.00	0.00	0.00	0.00	0.00	0.0	No recovery (soft material)*
65.90	0.70	45.40	10.25	55.65	109.0	58.03	40.6	Massive sulphide
56.30	10.30	14.56	5.02	19.58	42.6	20.51	211.3	Entire interval
60.00	6.60	21.46	6.95	28.42	58.7	29.70	196.0	Massive sulphide (w core gap)
61.30	3.50	29.48	9.84	39.32	79.3	41.05	143.7	Continuous massive sulphide

Note: All above intersection are interpreted to be approximately true thickness; * Small fragments of massive sulphide were recovered but not enough to assay; "Zn-Eq %" combines Zn, Pb and Ag into a single number and is calculated from metal prices (US\$) as follows: \$1.00/lb Zn, \$1.00/lb Pb and \$15.00/oz Ag; "sph" is sphalerite (zinc bearing mineral); "gal" is galena (lead bearing mineral); "py" is pyrite (iron sulphide); "WL" means Waulsortian limestone; "w" means 'with'.

Exhibit 4. Plan Map Showing G11-2840-04 and All Historic Holes at Zone 1 of the Carrickittle Prospect



Note: "Sph and Gal" above means that some sphalerite (zinc-bearing mineral) and galena (lead-bearing mineral) were observed in the core, however, in insufficient amounts to warrant assays (laboratory analysis).

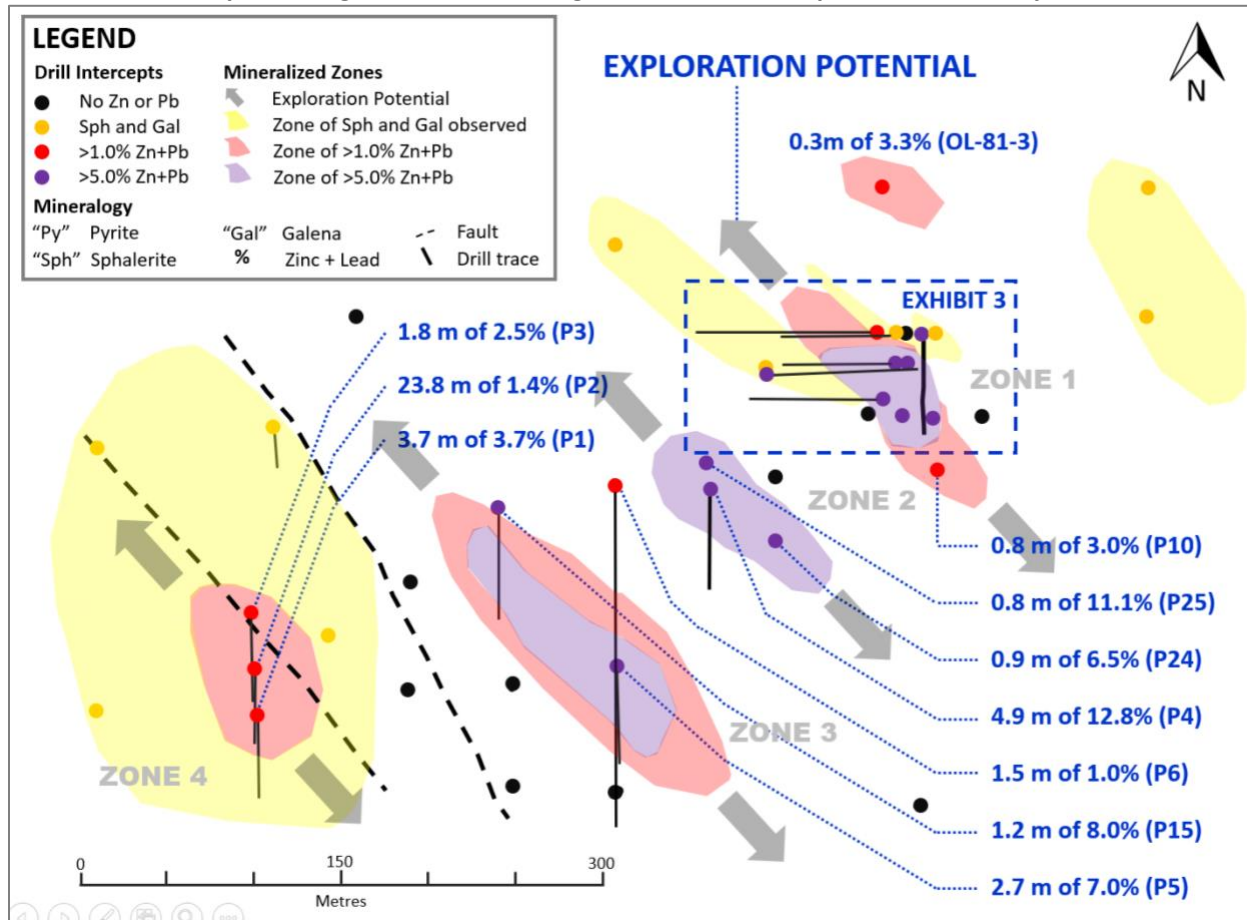
Immediate Exploration Potential at Carrickittle Prospect – Zone 1, Zones 2-4 and NW Faults

A number of new and important datapoints emerged from hole G11-2840-04, including: (a) a thick, continuous and high-grade **massive sulphide body exists** at Zone 1 at Carrickittle; (b) the orientation of the massive sulphide body appears to be **moderately-steeply dipping to the west**; (c) the massive sulphides are **associated with a fault zone** which dips steeply to the west or southwest and is interpreted to strike north-south or northwest.

The fault zone and the orientation of the massive sulphide body provide a very specific exploration vector towards the north-northwest and south-southeast. Approximately 25 metres to the north of G11-2840-04, historic hole P21 intersected six discrete zones (0.3 metres to 0.9 metres wide) of low-grade mineralization (0.5% to 2.2% zinc and lead; see [Exhibit 5](#)) over a downhole length of 79.3 metres. Hole P19 similarly intersected low-grade mineralization from 66 metres to 73 metres downhole. This suggests that P21 and P19 may have been drilled along the low-grade top of a mineralized body, similar to P18.

The trend further towards the north-northwest is open, with only sparse regional drilling and the prospective horizon (Waulsortian limestone) extending for at least another kilometre. To the south-southeast, no drilling has yet been conducted and the prospective horizon continues for another several hundred metres.

Exhibit 5. Plan Map Showing All Historic Drilling at Carrickittle Prospect, PG West Project, Ireland



Note: "Sph and Gal" above means that some sphalerite (zinc-bearing mineral) and galena (lead-bearing mineral) were observed in the core, however, in insufficient quantities to warrant assays (laboratory analysis).

In addition to Zone 1, three other zones of known mineralization exist at Carrickittle (see [Exhibit 5](#)) and each now requires immediate follow-up and reinterpretation. Historic drilling in Zones 2, 3 and 4 was oriented similar to Zone 1 (i.e. vertical or to the south), therefore, may have also missed the main sulphide bodies.

Outside of known areas of mineralization, immediate exploration upside resides along a series of northwest-trending faults at the Carrickittle prospect. These faults are known to be associated with intense dolomitization, an alteration type commonly linked with zinc mineralization in Ireland. The faults are also parallel or sub-parallel to the fault controlling mineralization in G11-2840-04, and more broadly, the Pallas Green Corridor (see [Exhibit 1](#)). Several historic holes were conducted in the vicinity of these faults, however, were mostly drilled to only shallow depths and were not oriented to the west.

As a general comment, the presence of thick, high-grade massive sulphides suggests that, not only were the necessary geologic conditions for zinc mineralization present, but they may have been extensive and long lasting. If true, this further adds exploration potential to the Carrickittle prospect.

Exhibit 6. Summary of Notable Historic Drill Results at Carrickittle, PG West Project, Ireland

Hole	Entity	Year	Dip (°)	From (m)	Int (m)	Zn (%)	Pb (%)	Zn+Pb (%)	Ag (g/t)	Zn-Eq (%)	m x % Zn-Eq
Zone 1											
P7	Tara	1965	-50 S	33.99	1.52	27.5	7.8	35.3	62.8	36.7	55.9
P9	Tara	1965	-90	10.36	3.35	4.9	3.3	8.1	43.1	9.1	30.5
P10	Tara	1965	-90	34.44	0.76	0.2	2.9	3.0	n/a	3.0	2.3
P16	Tara	1965	-90	18.90	1.07	33.4	7.4	40.8	128.5	43.6	46.5
P17	Tara	1965	-90	31.09	2.44	23.0	3.8	26.8	60.7	28.1	68.5
P18	Tara	1965	-50 W	40.54	15.54	6.8	2.2	8.9	13.1	9.2	143.2
P21	Tara	1966	-50 W	135.82	0.46	1.3	0.3	1.6	n/a	1.6	0.7
P22	Tara	1966	-50 W	44.35	1.37	4.8	0.9	5.7	n/a	5.7	7.8
2840-04	ZNG	2020	-45 E	56.30	10.30	14.6	5.0	19.6	42.6	20.5	211.3
Zone 2											
P4	Tara	1965	-80 S	18.29	4.88	11.4	1.4	12.8	n/a	12.8	62.2
P24	Tara	1966	-90	9.75	0.91	2.7	3.9	6.5	n/a	6.5	6.0
P25	Tara	1966	-90	29.47	0.82	8.7	2.4	11.1	n/a	11.1	9.2
Zone 3											
P5	Tara	1965	-50 S	31.09	2.74	4.8	2.3	7.1	n/a	7.1	19.3
P6	Tara	1965	-50 S	67.06	1.52	0.3	0.7	1.0	n/a	1.0	1.5
P15	Tara	1965	-50 S	66.75	1.22	6.8	1.2	8.0	n/a	8.0	9.8
Zone 4											
P1	Tara	1965	-50 S	8.53	3.66	2.7	1.0	3.7	n/a	3.7	13.4
P2	Tara	1965	-50 S	20.73	23.77	1.0	0.4	1.4	n/a	1.4	32.9
P3	Tara	1965	-50 S	28.04	1.83	2.2	0.3	2.5	n/a	2.5	4.6
Regional											
OL-81-03	Billiton	1981	-90	335.10	0.30	3.2	0.1	3.3	n/a	3.3	1.0

Note: "Zn-Eq %" combines Zn, Pb and Ag into a single number and is calculated from metal prices (US\$) as follows: \$1.00/lb Zn, \$1.00/lb Pb and \$15.00/oz Ag;

Background on Carrickittle Prospect

Carrickittle was discovered in 1965 by Tara Exploration and was drilled throughout 1965 and 1966 with 33 holes. Follow-up work in the late 1960s and 1970s largely focussed on regional exploration in the area with an emphasis on soil geochemistry and ground geophysical surveys, as well as, geological mapping. In 1981, Billiton drilled seven vertical holes in a wide-spaced pattern forming a semi-circle on the northern side of the prospect (returning only weak mineralization).

To Group Eleven’s knowledge, previous operators did not focus on the exact orientation and controls of mineralization at Carrickittle and little work (outside a few shallow holes) was done to test the NW oriented faults in the area. Based on the large number of vertical holes drilled, previous operators appear to have been searching for flat-lying mineralization (as opposed to steeply-dipping). Historic exploration also tended to follow an east-west direction, along the strike of the prospective horizon (Waulsortian Limestone).

Ongoing Drill Program

Group Eleven continues to progress on the remainder of its drill program in the Limerick area and will release results in due course, once work is completed and results are received, compiled and analysed.

Quality Assurance / Quality Control (QA/QC)

Drill-core samples were prepared and assayed in the ALS Minerals Laboratory in Loughrea, Ireland. Samples were fine-crushed (CRU-31) to 70% < 2mm and pulverized and riffle-split to 85% < 75 µm. Zinc, lead and silver assays were obtained by multi-acid (4-acid) digestion/ICP-MS Package (48 Elements), with ore-grade samples and Au also analysed using multi-acid ICP-AES. Analytical accuracy and precision are monitored by the submission of two standards and one blank inserted into the sample train of 18 samples by Group Eleven personnel. No duplicate samples were sent to the lab. ALS ran one blank and two duplicates as part of their internal QC procedures.

Qualified Person

Technical information in this news release has been approved by David Furlong, P.Ge., Chief Operating Officer, and 'Qualified Person' as defined under Canadian National Instrument 43-101.

About Group Eleven Resources

Group Eleven Resources Corp. (TSX.V: ZNG; OTC: GRLVF and FRA: 3GE) is a mineral exploration company focused on advanced stage zinc exploration in Ireland. Additional information about the Company is available at www.groupelevenresources.com.

ON BEHALF OF THE BOARD OF DIRECTORS

Bart Jaworski, P.Ge.

Chief Executive Officer

E: b.jaworski@groupelevenresources.com | T: +353-85-833-2463

E: s.heinrichs@groupelevenresources.com | T: +604-630-8839

Neither TSX Venture Exchange nor its Regulation Services Provider (as that term is defined in the policies of the TSX Venture Exchange) accepts responsibility for the adequacy or accuracy of this release.

Cautionary Note Regarding Forward-Looking Information

This press release contains forward-looking statements within the meaning of applicable securities legislation. Such statements include, without limitation, statements regarding the future results of operations, performance and achievements of the Company, including the timing, content, cost and results of proposed work programs, the discovery and delineation of mineral deposits/resources/reserves and geological interpretations. Although the Company believes that such statements are reasonable, it can give no assurance that such expectations will prove to be correct. Forward-looking statements are typically identified by words such as: believe, expect, anticipate, intend, estimate, postulate and similar expressions, or are those, which, by their nature, refer to future events. The Company cautions investors that any forward-looking statements by the Company are not guarantees of future results or performance, and that actual results may differ materially from those in forward looking statements as a result of various factors, including, but not limited to, variations in the nature, quality and quantity of any mineral deposits that may be located. All of the Company's public disclosure filings may be accessed via www.sedar.com and readers are urged to review these materials, including the technical reports filed with respect to the Company's mineral properties.